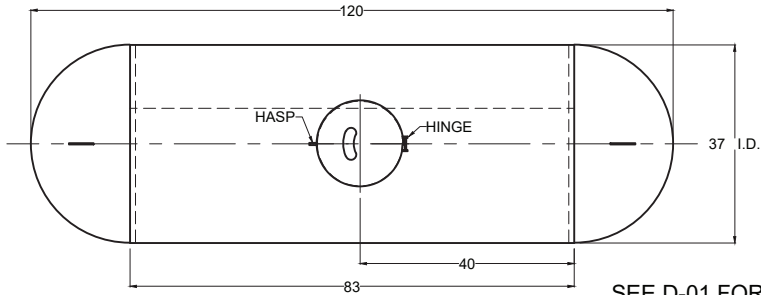
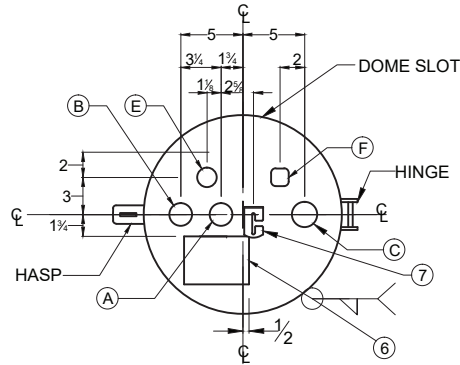


THIS VESSEL IS DESIGNED FOR THE STORAGE
OF LIQUEFIED PETROLEUM GAS ONLY

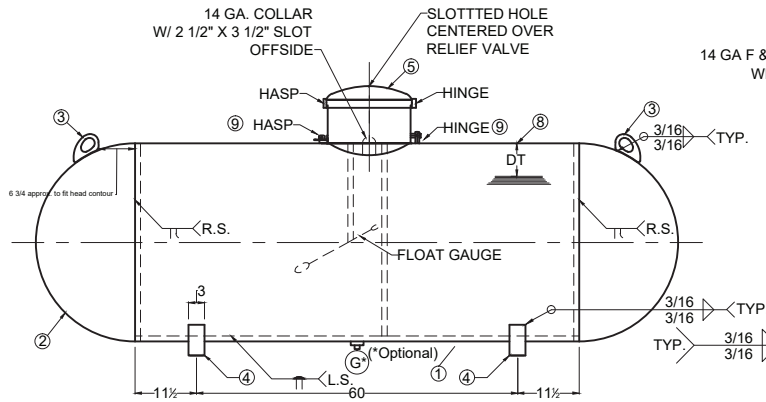


TOP VIEW

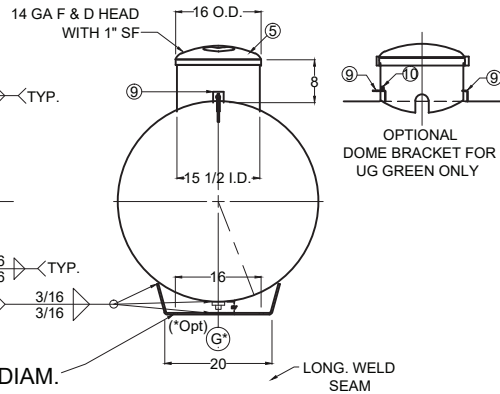
SEE D-01 FOR ANY
UNSPECIFIED WELD DETAILS



FITTING LAYOUT



SIDE ELEVATION



END VIEW

3/4 DIAM.
HOLES
(4) PLACES

* May vary long seam
loc. to miss leg weld

NOTE: TANK MUST BE INSTALLED LEVEL, WITH ALL LEGS IN SAME
PLANE TO ASSURE EVEN DISTRIBUTION OF LOAD AND OPTIMIZE
ACCURACY OF GAUGE DEVICE.

MARK	QTY.	SIZE	TYPE	FITTINGS		SERVICE	MARK	QTY.	DESCRIPTION	DWG. NO.
				REGO						
A	1	1	XH FLG.	008684GT		RELIEF VALVE	1	1	SHELL- 0.218" X 83" X 116 11/16" - SA414G	
B	1	1	XH FLG.	SQUIBB TAYLOR HA18AP OR ROCHESTER B 8961-27		FLOAT GAUGE	2	2	HEADS - 37" I.D. X 0.185" - HEMI: SA414C	
C	1	1-1/4	XH FLG.	L007579T		FILL VALVE	3	2	LIFTING LUGS	D - 63
E	1	3/4	XH FLG.	PT007556RS10.5		MULTI VALVE	4	2	TANK LEGS	D - 3
F	1	3/4	XH FLG W/ EVAC. TUBE	007590UT		CHEK-LOK	5	1	DOME	D - 5
G(OPT)	1	1 1/4	XH FLG.			PLUGGED OPENING	6	1	DATA PLATE	D - 60
							7	1	REGULATOR BRACKET	D - 10
							8	1	DIP TUBE LENGTH = 10.5" FOR 80% @ 40° F	
							9	2	HINGE AND HASP OR DOME BRACKETS	D-10, D-19, D-47
							10	1	ANODE ATTACHMENT	D - 17

PART NO: 0105002x

REV.	BY:	DESCRIPTION	DATE
14	CDH	ADDED HINGE & HASP AT SHELL	12/12/01
15	CDH	ADDED NOTE AT LEG DESCRIPTION	3/6/02
16	CDH	REVISED MDMT PRESSURE TO 250 PSI	8/23/02
17	CDH	CORRECTED RELIEF VLV. MODEL NOS.	11/5/03
18	CDH	CORRECTED SHELL LENGTH	11/12/03
19	wlo	REVISED COMPANY NAME	12/08/07
20	wlo	NEW NAME PLATE AND MOVED RELIEF VALVE	01/23/13
21	bts	REVISED SHELL LENGTH	03/18/14
22	bts	CHANGE FITTING LOCATION	04/10/14
23	TWV	NEW NAME PLATE AND STD. LEGS, LUGS, BRACKETS	01/04/16

CERTIFIED BY: QUALITY STEEL CORPORATION
CLEVELAND, MS - FREMONT, OH - WEST JORDAN, UT

	MAX. ALLOW. WORK. PRESS. 250 PSI AT 400 °F.	OUTSIDE DIA. 37.5 IN.	M.D.M.T. -20 °F. AT 250 PSI
U W. RT4	YEAR BUILT 201	SHELL THK. .218 IN.	SER. NO. *
ASME	LENGTH 120 IN.	SURFACE AREA. 100 SQ. FT.	CONTAINER ASSEMBLY FOR LP GAS
IQ5	HEAD THK. 1.85 IN.	HEAD D.R. HEMI.	WATER CAPACITY 500 GALLONS

THIS CONTAINER SHALL NOT CONTAIN A PRODUCT HAVING A VAPOR PRESSURE IN EXCESS OF 215 PSI AT 100°F. DIP TUBE LENGTH - 80% FULL AT 40°F. D.T.= [10.5] IN.

DATA PLATE DETAIL

GENERAL NOTES:

1. LIFTING LUGS DESIGNED FOR TOTAL LIFTING WEIGHT OF 1500#.
2. TOTAL EMPTY WEIGHT IS 950#.
3. ALL DIMENSIONS ARE IN INCHES UNLESS OTHERWISE SPECIFIED
4. COMPLETE TANK DRIED TO REMOVE ALL MOISTURE
5. ALL WEIGHTS AND CAPACITIES ARE APPROXIMATE
6. EXTERIOR OF TANK TO BE GRIT BLASTED
7. PAINT PER SHOP ORDER
8. VACUUM PURGE TANK
9. DIMENSION ARE SUBJECT TO CHANGE WITHOUT NOTICE. (NON-PRESSURE RETAINING COMPONENTS ONLY)
10. THREADS OF ALL FITTINGS TO BE COATED WITH COMPOUND SUITABLE FOR USE WITH LP GAS
11. FLOAT GAUGE TO BE INSTALLED WITH FLOAT ARM 45° OFF LONGITUDINAL CENTERLINE OF TANK.

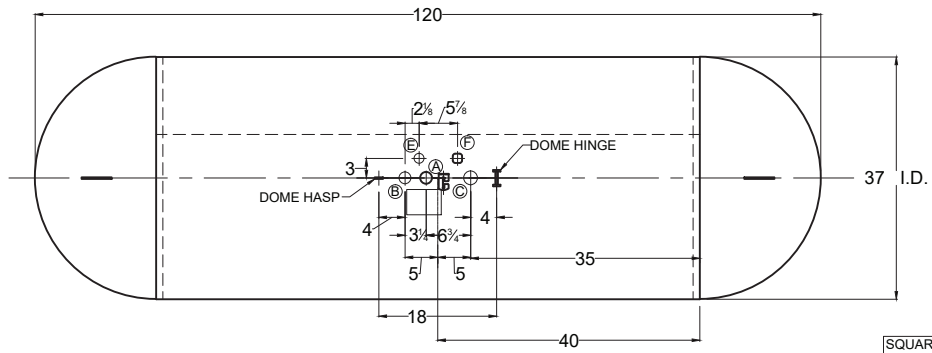
GENERAL SPECIFICATIONS

WATER CAPACITY (GALLONS)	500
ALLOWABLE WORKING PRESSURE (PSIG)	250
JOINT EFFICIENCY: ASME UW-51 LONG SEAM	100 %
ASME UW-52 HEAD TO SHELL	80 %
HYDROSTATIC TEST PRESSURE (PSIG)	325
SURFACE AREA (SQ. FT.)	100
RELIEF VALVE SETTING (PSIG)	250
RELIEF DISCHARGE RATE - (CFM REQ'D.)	2340
HEAT TREATMENT NOT REQUIRED	
CODE: ASME SECTION VIII DIV. I	
STANDARDS: UNDERWRITERS LABORATORIES INC.	MH-7203
MATERIAL SPEC. P.A. 58 LP GAS CODE	
COUPLINGS SA-105	
TANK FLANGES SA-105 or SA-181-70	
ADAPTOR SA-105	

500 W.G. ABOVE/UNDERGROUND
PROPANE TANK-TYPE IQ5 (FORMERLY AWT-9A)

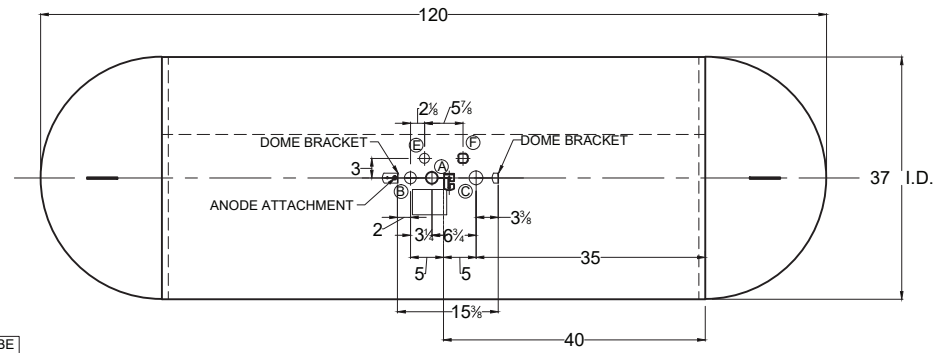
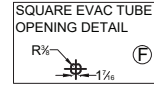
QUALITY STEEL CORPORATION

DATE: 01 / 03 / 00	DRAWN BY: RAC	APPROVED BY: TWV	REVISION: 23	DRAWING No.: X - 500
--------------------	---------------	------------------	--------------	----------------------



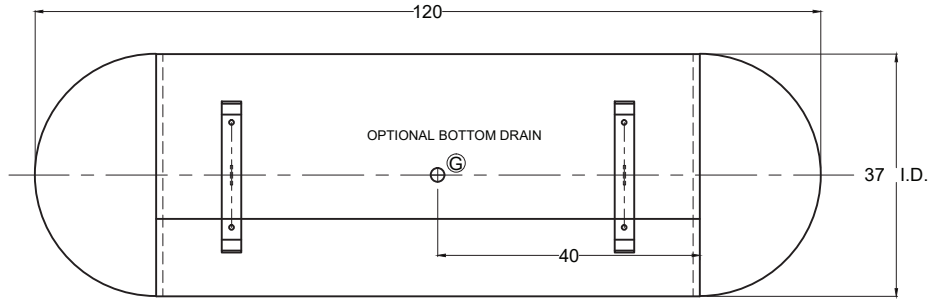
TOP VIEW

WITH HINGE AND HASP FOR NON-UG GREEN TANKS



TOP VIEW

WITH DOME BRACKETS FOR UG GREEN TANKS



BOTTOM VIEW

MARK	QTY.	SIZE	HOLE DIA
A	1	1	1 13/16
B	1	1	1 13/16
C	1	1-1/4	2 1/16
E	1	3/4	1 9/16
F	1	3/4	SEE DETAIL
G (OPT)	1	1 1/4	2 1/16

NOTE: SEE
TANK
DRAWING
FOR
REVISION
BLOCK

500 W.G. ABOVE/UNDERGROUND PROPANE TANK-TYPE IQ5 (FORMERLY AWT-9A)				
QUALITY STEEL CORPORATION FITTING LAYOUT				
DATE: 01 / 03 / 00	DRAWN BY: RAC	APPROVED BY: TWV	REVISION: 23	DRAWING NO.: X - 500